



New Functions Added to the MOTIF XS Series by Updating the IEEE1394 Firmware to V1.07

Thank you for using Yamaha products.

Updating the IEEE1394 Firmware to V1.07 lets you perform data communication via the Yamaha Steinberg FW Driver between the computer and MOTIF XS series (including the MOTIF XS6/7/8 and MOTIF-RACK XS) to which the mLAN16E2 has already been installed. This also allows you to add the MOTIF XS series to your music creation system established via connection between the computer and the devices such as Steinberg MR816 CSX/MR816 X compatible with Yamaha Steinberg FW Driver.

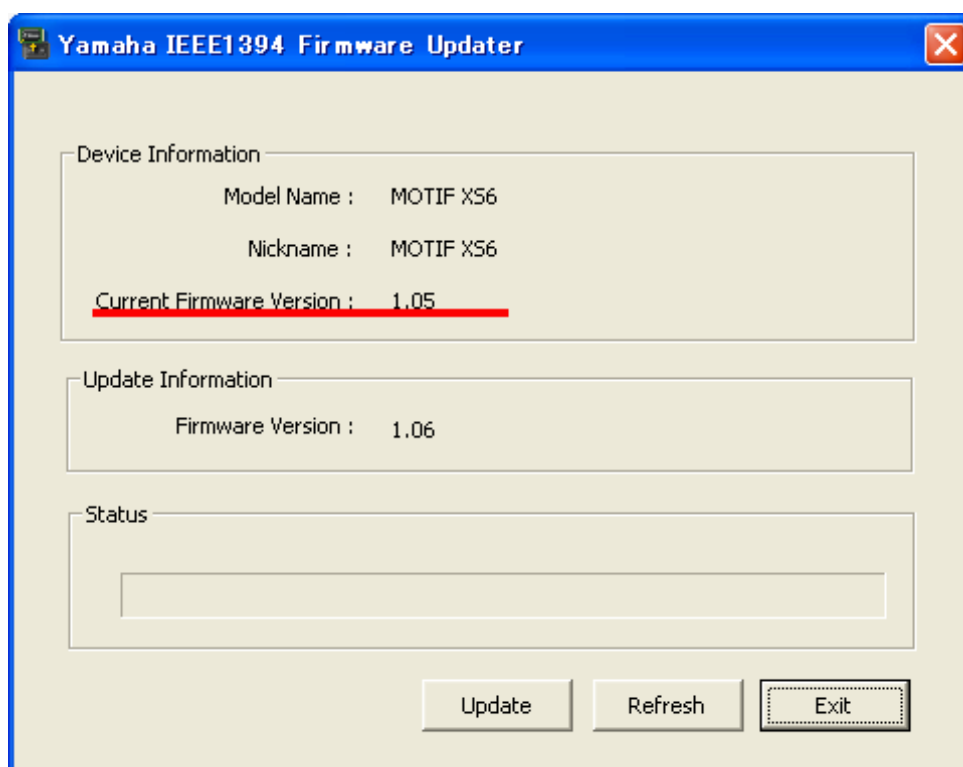
This document covers the instructions required for connecting the MOTIF XS series to your computer.



The MOTIF XS8 is equipped with two mLAN connectors equivalent to the mLAN16E2 by default.

■ Checking the version of the IEEE1394 firmware

The version of the IEEE1394 firmware can be checked on the window of the IEEE1394 firmware updater. The current version is indicated at the Current Firmware Version column in the Device Information field.



■ Setting up on the computer

Before connecting the MOTIF XS series to the computer, follow the instructions below.

- **Install “Yamaha Steinberg FW Driver” to the computer.**

You can download the Yamaha Steinberg FW Driver. Please check the following URL for the latest version.

http://www.yamahasynth.com/download/motif_xs.html

- **Update the firmware of the MOTIF XS 6/7/8 to V1.10 or later.**

It is not necessary to update the firmware of the MOTIF-RACK XS.

- **Update the IEEE1394 firmware to V1.07 or later.**

For instructions, refer to “IEEE1394 Firmware Updater Instruction Guide.”

■ Setting up on the MOTIF XS series instrument

The operations above will add the setting “FW” for the IEEE1394 parameter in the Utility mode on the MOTIF XS series instrument. Selecting “FW” makes the Yamaha Steinberg FW Driver available. After selecting “FW,” make sure to store the Utility settings by pressing the [STORE] button then restart the MOTIF XS series instrument to enable this setting.



No sound may be produced for approximately 30 seconds after the opening display disappears when you restart (turn off and on) the MOTIF XS series for the first time after the “FW” setting is stored. While this condition continues (you can see “Please keep power on” on the LCD display if you are using the MOTIF XS 6/7/8), never turn off the MOTIF XS series because this condition is normal.



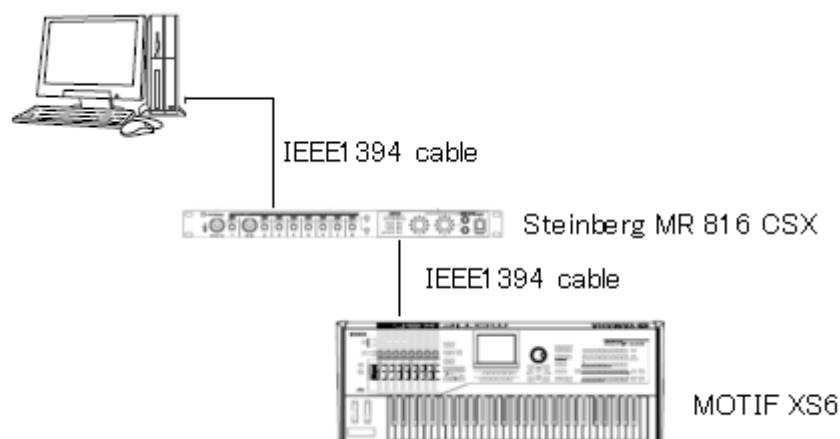
Each value of the IEEE1394 parameter should be selected according to the driver you are using on the computer. For details, see below.

Value of the IEEE1394 Driver parameter	Driver you are using on the computer
mLAN	AI Driver or mLAN Driver / mLAN Tools
FW	Yamaha Steinberg FW Driver

■ Example: Connections between the MOTIF XS series, Steinberg MR816 CSX/MR816 X and computer

As shown in the example illustration below, connect the MOTIF XS series and Steinberg MR816 CSX/MR816 X to the computer in daisy-chain fashion. Up to three devices (including the MOTIF XS series and Steinberg MR816 CSX/MR816 X) can be connected to the computer in daisy-chain fashion.

< Example >



Regarding the MOTIF XS series, up to two instruments can be connected in daisy-chain fashion.

* The company names and product names in this document are the trademarks or registered trademarks of their respective companies.