



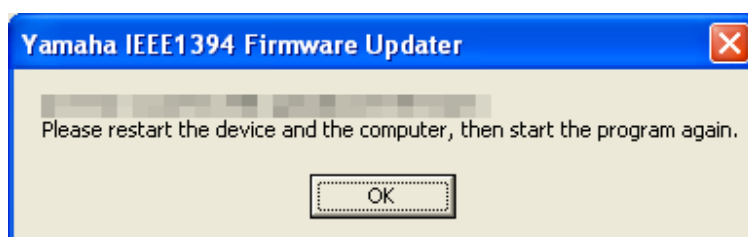
## IEEE1394 Firmware Update Guide (For Windows)

Thank you for choosing a Yamaha product.

This document covers how to update the mLAN16E2 firmware by using the IEEE1394 Firmware Updater, resulting that the mLAN16E2 is compatible with the MOTIF XF series. The update is operated from the computer connected via an IEEE1394 cable to the mLAN16E2 with which MOTIF XF is equipped.

### Precautions (please be sure to read these)

- The user assumes full responsibility for the update.
- Please note that the device may be damaged if you fail to follow these instructions properly, or turn off the device or disconnect the cable while the update is in progress. When a message appears in the display prompting you to restart your computer as illustrated below, follow the on-screen instructions.



- If the update fails, and the device still does not operate correctly even after you execute the update once again, please contact your Yamaha dealer.
- This software and documentation are the exclusive copyrights of Yamaha Corporation.
- Reproducing or modifying all or part of this software or its documentation without permission is strictly prohibited.
- The screen shots in this guide are for use with this update procedure only and may be different from the actual screen shots.
- Windows is a registered trademark of Microsoft(R) Corporation in the United States and other countries.
- The company names and product names in this document are the trademarks or registered trademarks of their respective companies.

### System requirements

Your system must satisfy the following requirements in order to update successfully.

A Windows computer equipped with the following conditions:

- The following drivers is installed and works properly on the computer.
  - Yamaha Steinberg FW Driver
- The computer is equipped with an IEEE 1394 (FireWire) connector of S400 type (transfer speed: 400 Mbps ) or an i.LINK connector

### Included Files

This folder contains the following files:

- update\_guide\_win\_en.pdf
- releasenotes\_en.pdf
- IEEE1394\_Firmware\_Updater.exe
- IEEE1394\_Firmware.bin

This document (PDF file)  
Describes the update history.  
The update program  
The update data

## Preparing for the update

Before starting the update program, quit all other programs. While the update is in progress, do not start any other programs or switch between windows.

If your computer enters Sleep or Energy Save mode, data transfer to the device may stop. Therefore, you should disable these functions to prevent this from happening. We also recommend that you do not use any screen saver or similar background programs.

Make sure that "IEEE1394\_Firmware\_Updater.exe" and "IEEE1394\_Firmware.bin" reside in the same folder.

## Update procedure

### 1. Connect a computer directly to a device (without using a hub) by using an IEEE1394 cable.

Be sure to disconnect all other IEEE1394 devices, except the one to be updated.

### 2. Double-click "IEEE1394\_Firmware\_Updater.exe" to start the program.

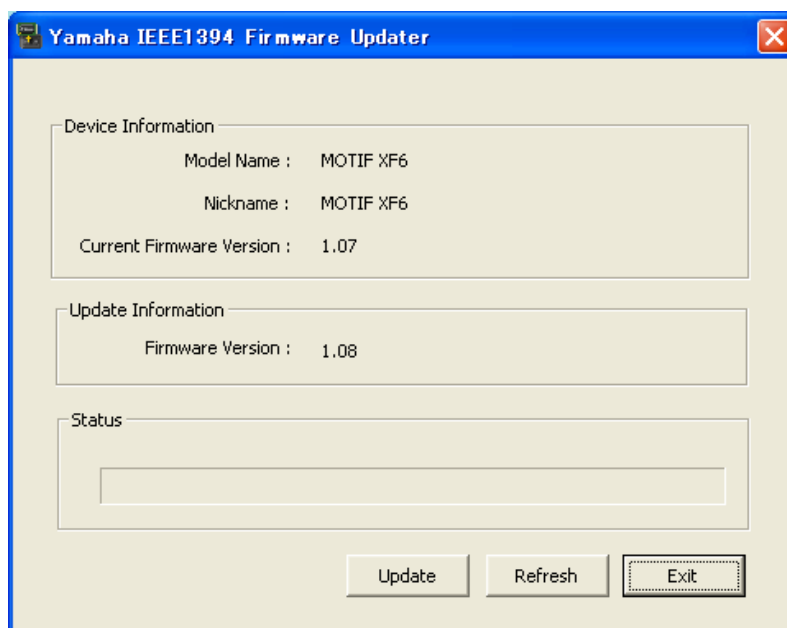


- If an error message appears, check the cable connection and system requirements, and start the program again.
- For details about the error messages, see page 4.

### 3. Confirm that the Device Information indicates the name of the device to be updated.



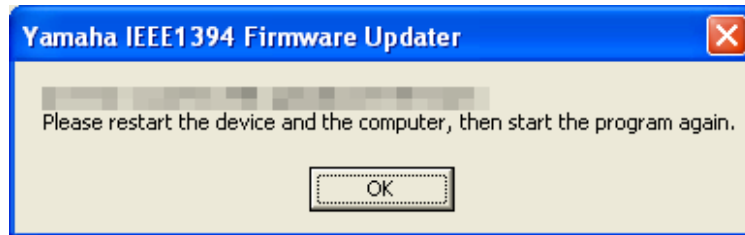
- If the name of the device to be updated does not appear in the Device Information, check the cable connection then click the [Refresh] button.



4. Click the [Update] button to start the update process.

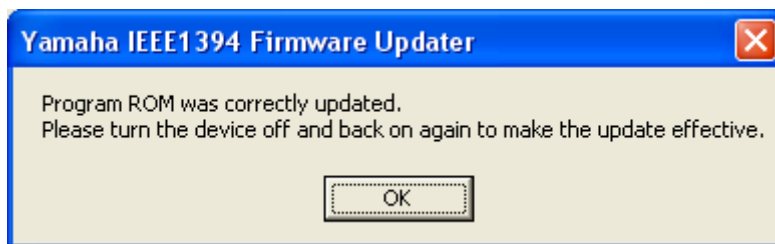
#### NOTICE

It may take approximately 30 seconds to complete the update process. While the update is in progress, never turn off the device or disconnect the cable. Please note that the device may be damaged if such a situation happens accidentally while the update is in progress. When a message appears in the display prompting you to restart your computer as illustrated below, follow the on-screen instructions. For information about the messages, see the next page.



If the update fails, and the device still does not operate correctly even after you execute the update once again, please contact your Yamaha dealer.

5. When the following message appears, the update process has been completed. Click [OK], click [EXIT] and turn off the device.



## Error messages



- If the same error message appears each time you try to update, the device may need repairing, in which case you should contact your Yamaha dealer.

**"Your system doesn't satisfy the system requirements for the update.  
Please make sure the requirements are satisfied, then start the program again."**

**Solution:** As described above.

**"An error occurred while communicating with the device.  
Please restart the device and the computer, then start the program again. "**

**Solution:** As described above.

**"Could not open the data file."**

**Solution:**

The data file for update may have been lost. Unzip the compressed file downloaded from the Yamaha web site again, then perform the procedure once again from the beginning.

**"The data file is not correct."**

**Solution:**

The data file for update may have been lost. Unzip the compressed file downloaded from the Yamaha web site again, then perform the procedure once again from the beginning.

**"An error occurred while uploading the firmware.  
Please restart the device and the computer, then start the program again. "**

**Solution:** As described above.

**"An error occurred while initializing the program ROM.  
Initialization will be executed again. "**

**Solution:**

Click [OK]. If the error message above appears again, click [Cancel] to exit the update program, restart the computer only (no other devices), then start the update program. Never turn the power of the device off in this situation.

**"An error occurred while updating the program ROM.  
The update will be executed again. "**

**Solution:**

Click [OK]. If the error message above appears again, click [Cancel] to exit the update program, restart the computer only (no other devices), then start the update program. Never turn the power of the device off in this situation.