

# MONTAGE Connect Owner's Manual

## Special Notices

- Copying of the commercially available music sequence data and/or digital audio files is strictly prohibited except for your personal use.
- The software and this owner's manual are exclusive copyrights of Yamaha Corporation.
- Copying of the software or reproduction of this manual in whole or in part by any means is expressly forbidden without the written consent of the manufacturer.
- Yamaha makes no representations or warranties with regard to the use of the software and documentation and cannot be held responsible for the results of the use of this manual and the software.
- The screen displays as illustrated in this Owner's Manual are for instructional purposes, and may appear somewhat different from the screens which appear on your computer.
- Windows is a registered trademark of Microsoft® Corporation in the United States and other countries.
- Mac and Macintosh are trademarks of Apple Inc., registered in the U.S. and other countries.
- Steinberg and Cubase are the registered trademarks of Steinberg Media Technologies GmbH.
- The company names and product names in this Owner's Manual are the trademarks or registered trademarks of their respective companies.

This owner's manual assumes that you are already familiar with basic Windows/Mac operations. If you are not, please refer to the owner's manual which came with your Windows/Mac software before using MONTAGE Connect. For information about hardware requirements, the interconnection of devices and the installation of the MONTAGE Connect software, refer to the separate Release Notes for MONTAGE Connect as well as the Owner's Manual for the respective MIDI device.

## What is MONTAGE Connect?

---

MONTAGE Connect is a convenient tool which lets you transfer data between your computer and the MONTAGE. Song data created on the MONTAGE can be transferred to your computer and the Performance data edited on the MONTAGE can be saved as a file (.X7B) on the computer.

MONTAGE Connect, based on Steinberg's VST3 technology, works as a VST3 plug-in with the Cubase series. The MONTAGE Connect also works as the same way as other VST instrument software, allowing you to save the edited settings of the MONTAGE, or use them for another project.

MONTAGE Connect also works as an AU plug-in. For AU compatible DAW software, refer to the separate Release Notes. It can also be used as standalone software.

# Data structure of MONTAGE Connect

MONTAGE Connect lets you save the following data as a single file.

- Current Performance data (latest status of edited Performance) files (.X7B)

Current settings includes the latest settings of the Common Edit and Element/Operator/Drum Key Edit parameters for each Part, as well as Mixing parameter settings such as pan, volume and effect for each Part.

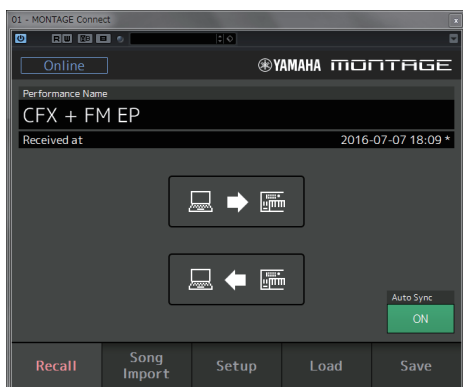
MONTAGE Connect also lets you import the following data to your computer.

- Song data: Standard MIDI files (.MID)

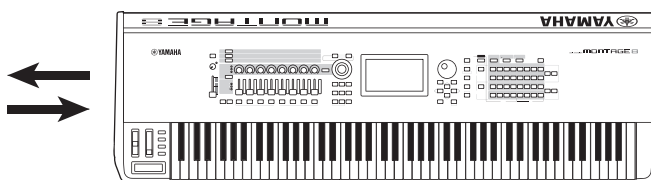
When you use MONTAGE Connect as a plug-in with DAW software, Performance data and Song data are saved as a single project file. Once you've loaded the project file, you can easily reproduce the MONTAGE settings and edit the Song on your DAW software.

The diagram illustrated below indicates the structure and the relationship of the data/files transferred between the MONTAGE and MONTAGE Connect.

## Recall display

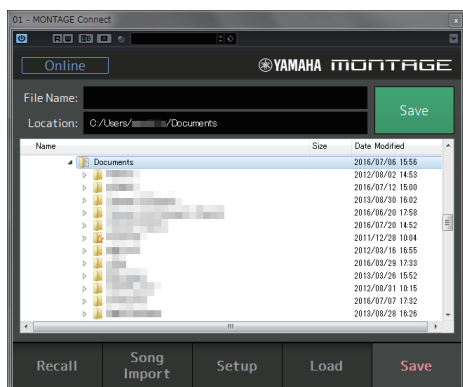


Transfer Bulk Dump by clicking Send/Receive buttons

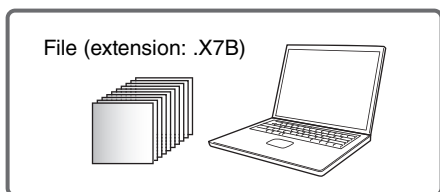


\* All transfer operations are available only when MONTAGE Connect (on the computer) and the MONTAGE are properly connected via USB (ONLINE status).

## Save display/Load display

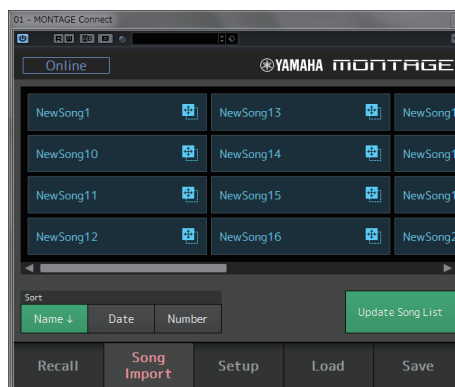


Save or load a file (.X7B) by clicking Save/Load buttons

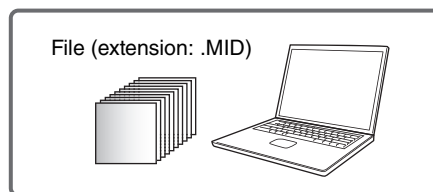


Performance data

## Song import display



Import a Song by drag-and-drop operation



Song data

# MONTAGE Connect Display

## Overall section

The MONTAGE Connect consists of five displays: Recall, Song Import, Setup, Load, and Save. This section explains the navigation bar and tabs which are common to all types of displays.



### 1 Online indicator

Shows whether MONTAGE Connect and the MONTAGE are properly connected via USB (ONLINE status) or not.

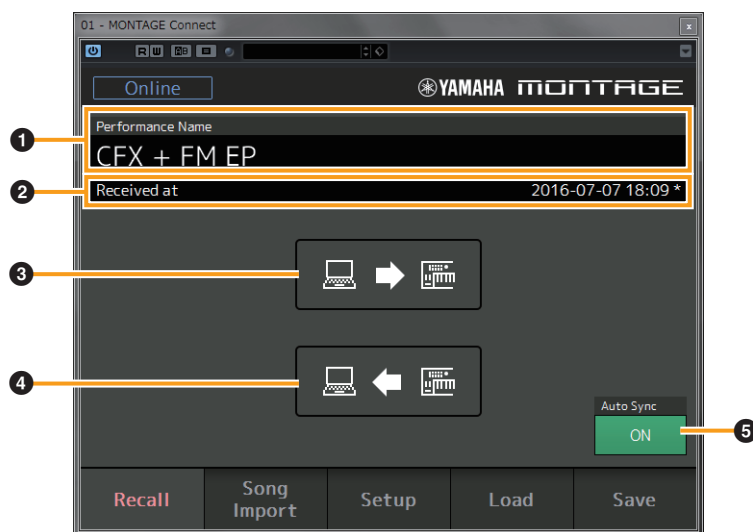
- **Online:** This Online indication shows that MONTAGE Connect is properly connected to the MONTAGE (Online status).
- **Not Ready:** Indicates that MONTAGE Connect and the MONTAGE are not ready (Offline status) even if the MIDI port setting and cable setting are properly configured. Data transfer operations are not available in this status. This is displayed even while the MONTAGE is using Compare function or while MONTAGE Connect is saving/loading files (.X7B).
- **Offline:** Indicates that MONTAGE Connect is not properly connected to the MONTAGE (Offline status) because the MIDI port setting and cable setting are not properly configured.

### 2 Display selection tabs

Calls up the selected display.

# Recall display

From the Recall display, you can transfer Performance data between the MONTAGE and MONTAGE Connect.



## 1 Performance Name

Displays the currently selected Performance name.

As soon as MONTAGE Connect receives Performance data from the MONTAGE or a file (.X7B) is loaded on the Load display, this Performance Name is updated.

## 2 Received date and time

Displays the date and time when Performance data was last received from the MONTAGE.

**NOTE** If Performance data is received from the MONTAGE but the data has not been saved as a file (.X7B) yet, a warning flag is displayed after the date and time.

## 3 Send button

Clicking this transmits (via bulk dump) the selected Performance data to the MONTAGE.

This is available only in Online status.

## 4 Receive button

Clicking this receives (via bulk dump) the Performance data which is currently selected on the MONTAGE.

This is available only in Online status.

## 5 Auto Sync button

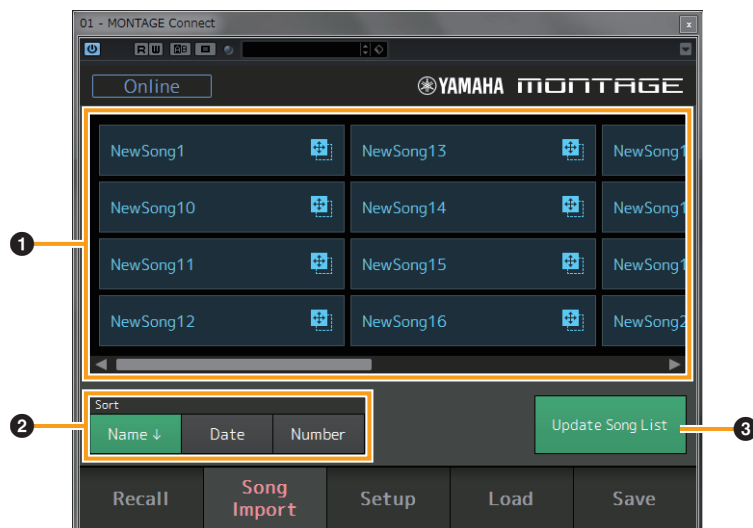
Determines whether or not Performance data is transferred automatically between the MONTAGE and MONTAGE Connect.

When this is set to On, the MONTAGE Connect transfers Performance data to the MONTAGE after a file (.X7B) is loaded and the MONTAGE Connect receives Performance data from the MONTAGE before a file (.X7B) is stored.

**Settings:** Off, On

# Song Import display

From the Song Import display, you can select Songs which are stored in the MONTAGE and import them to the computer or the DAW on the computer.



## 1 Song Select

Indicates the Songs stored in the MONTAGE.

A Song can be imported as a standard MIDI file (SMF) by dragging-and dropping the Song name icon to the computer or the DAW on the computer. This is available only in Online status.

## 2 Sort (Sort Order)

Determines the Sort Order of the Songs in “Song Select.”

This is available only in Online status.

- **Name:** Sorts by name. When the lower arrow is displayed, the List is arranged in ascending order (A to Z). When the upper arrow is displayed, the List is arranged in descending order.
- **Date:** Sorts in order of storing. When the lower arrow is displayed, the List is arranged in descending order (newer to older). When the upper arrow is displayed, the List is arranged in ascending order.
- **Number:** Sorts in order of Content Number.

## 3 Update Song List

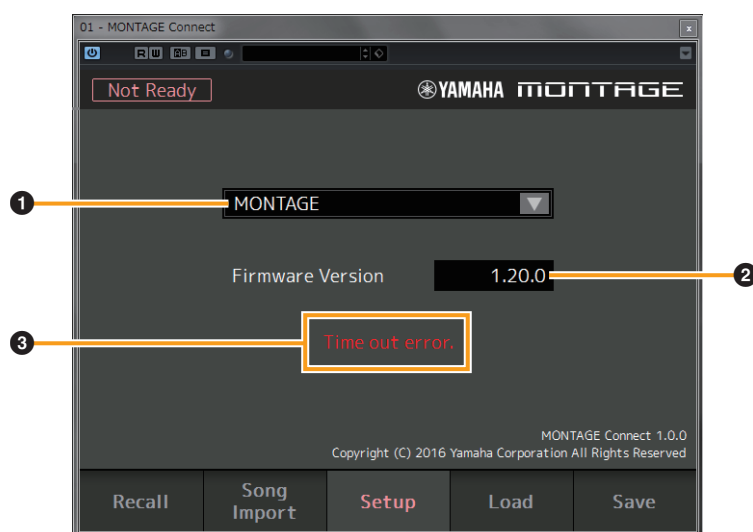
Receives the current Song List from the MONTAGE.

This is available only in Online status.

# Setup display

---

From the Setup display, you can make connected device settings with MONTAGE Connect.



## ❶ Device Select

Determines the instrument which is connected with MONTAGE Connect.  
If the MONTAGE instrument cannot be found, "No Assign" is shown.

## ❷ Firmware Version

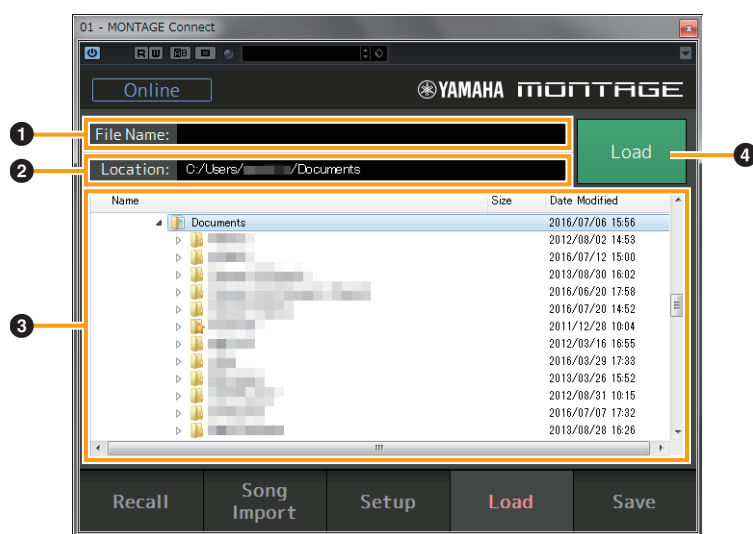
Displays the version of the MONTAGE instrument's firmware.

## ❸ Error message

Appears when MONTAGE Connect cannot get a response from the MONTAGE and another error occurs.

# Load display

From the Load display, you can load files (.X7B) which are saved in the computer.



## 1 File Name

Displays the selected File name. You can select the desired file by inputting a file name here.

## 2 Location

Displays the selected Folder name. You can select the desired folder by inputting a folder name here.

## 3 File List

Displays the folder and file tree in the computer. You can select the desired file (.X7B) for loading.

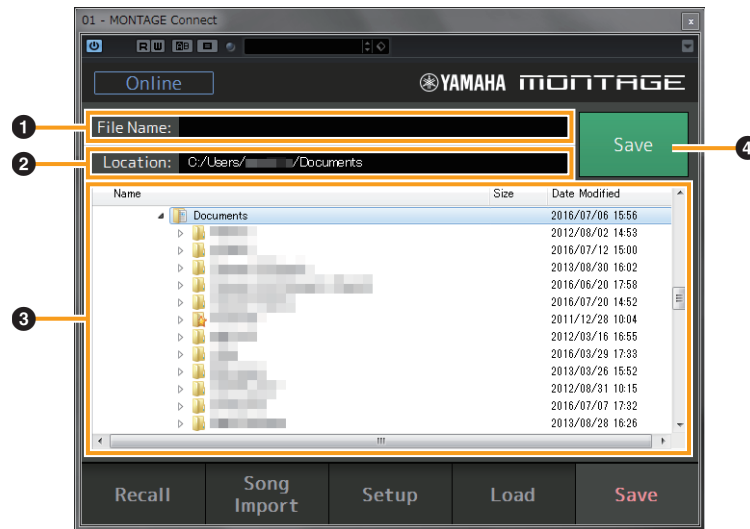
## 4 Load

Clicking this loads the selected file.

When Online status is active and Auto Sync ([page 4](#)) is set to on, the loaded file is automatically transmitted as Performance data to the MONTAGE.

# Save display

From the Save display, you can save Performance data received from the MONTAGE as a file (.X7B) on the computer.



## 1 File Name

Determines the file name to be saved.

## 2 Location

Displays the selected folder name. You can select the desired folder by inputting a folder name here.

## 3 File List

Displays the folder and file tree in the computer. If you select an existing file on the computer, the file will be overwritten.

## 4 Save

Clicking this saves the file. If you are about to overwrite an existing file, the display prompts you for confirmation. When Online status is active and Auto Sync ([page 4](#)) is set to on, the current Performance data is received from the MONTAGE and saved as a file.



# An Example of MONTAGE Connect

There is no single way to use the many components in MONTAGE Connect. Your editing needs and preferences may differ; however, the following example gives you a simple step-by-step guide in how to use MONTAGE Connect.

## Editing a Song recorded on the MONTAGE with DAW software

You can transmit the Song which is recorded by the Performance recorder (simple sequencer) of the MONTAGE to the computer and edit the Song on DAW software. This example shows use with Cubase.

Setting up:

Install the Cubase and Yamaha Steinberg USB driver by following the Installation Guide for each product. Connect the MONTAGE with the computer via the USB cable and make necessary MIDI IN/OUT settings on the MONTAGE.

**NOTE** For details on connecting the MONTAGE and the computer, see “Using a Connected Computer” in the MONTAGE Owner’s Manual.

**NOTE** On the MONTAGE, make sure that MIDI IN/OUT ([UTILITY] → [Settings] → [MIDI I/O]) is set to “USB.”

### 1. Record a Song on the MONTAGE.

**NOTE** For details on recording a Song, see “Recording and Playback” in the MONTAGE Owner’s Manual.

### 2. Start Cubase.

### 3. Create a new project on Cubase.

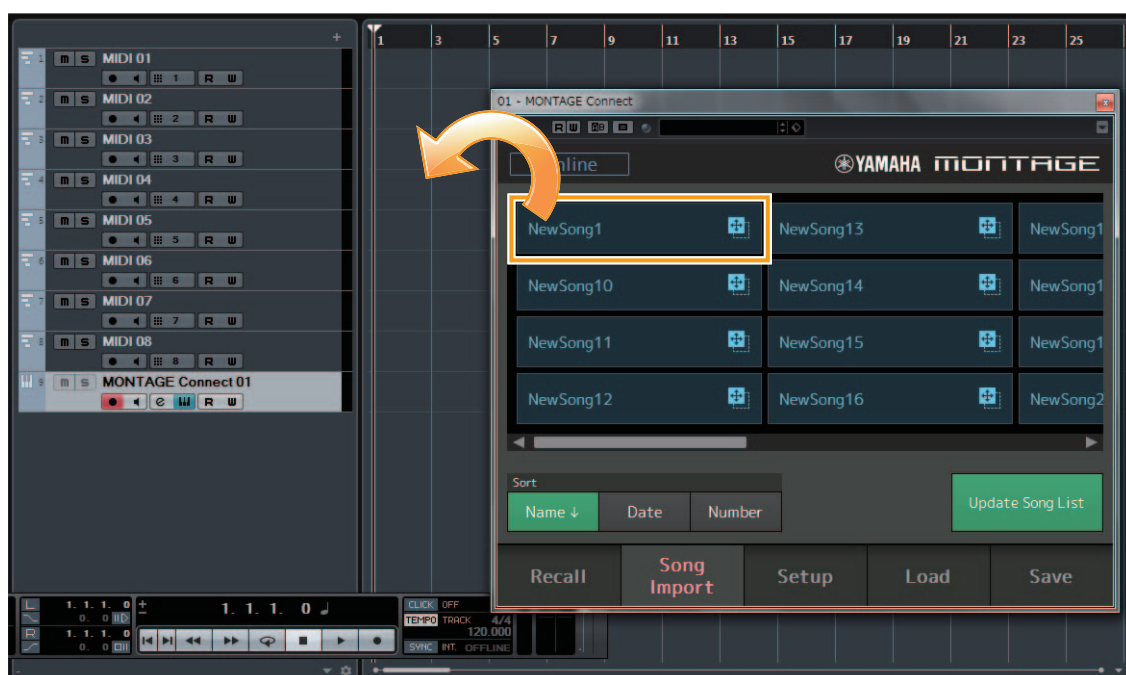
### 4. Add MIDI tracks according to the number of tracks in the Song.

### 5. Select [VST Instruments] from the [Devices] menu in Cubase.

### 6. Click on a VST Instrument slot to open the pop-up selection menu name field and select [MONTAGE Connect].

### 7. Open the Song Import display of the MONTAGE Connect, and drag-and-drop the Song recorded in Step 1 from the MONTAGE Connect to the “Event Display” area of Cubase.

The Song is imported as a standard MIDI file (SMF).

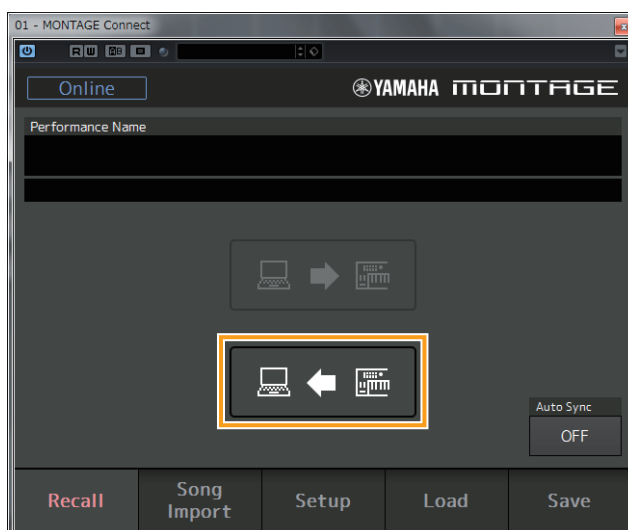


### 8. Edit MIDI data on Cubase.

**9. After you've finished editing, click the receive button in the Recall display of the MONTAGE Connect.**

MONTAGE Connect receives (via bulk dump) the currently selected Performance data on the MONTAGE.

**NOTE** Step 9 is not necessary when "Auto Sync" is set to on in MONTAGE Connect because Performance data is automatically transmitted from the MONTAGE after Step 10.



**10. On Cubase, select [Save] or [Save as] from the [File] menu to save the Cubase project file.**

MIDI data and Performance data are saved as a single project file. You can reproduce the Performance settings on the MONTAGE by opening the project file the next time via MONTAGE Connect.

**NOTE** When "Auto Sync" is set to on in the MONTAGE Connect, Performance data is automatically transmitted to the MONTAGE when the file is opened next time.

**11. Close Cubase.**

# Troubleshooting

---

If you encounter problems such as abnormal behavior, make sure to verify the connections before checking the following.

## **Bulk data is not transmitted/received successfully.**

- Is the MONTAGE Connect in Online status?
- Is the “Online” indicator turned on?  
If it is turned off, the settings related to communication between the MONTAGE and the computer may be wrong. Check the device setting ([page 6](#)) on MONTAGE Connect, make sure that the MIDI connection setting (MIDI IN/OUT is set to USB via [UTILITY] → [Settings] → [MIDI I/O]) on the MONTAGE itself, or confirm proper cable connection between the MONTAGE and the computer.

## **Cannot be set to ONLINE.**

- Check whether or not the MONTAGE is connected to the computer properly, and check whether or not the power of the MONTAGE is turned on.
- On Windows, quit any application software which may be using the MONTAGE Port. If the application software closes unexpectedly without user input, restart the computer.
- Check the version of the MONTAGE's firmware.

## **“Time Out Error” is shown.**

- This message appears when the computer cannot get a response from the MONTAGE and another error occurs. Check whether or not the MIDI IN/OUT parameter of the MONTAGE is set properly to USB via [UTILITY] → [Settings] → [MIDI I/O].