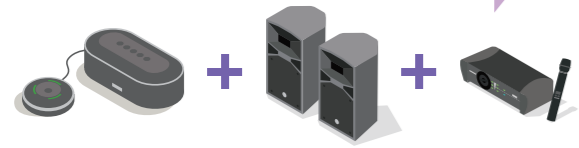


PARTICIPANTS AT THE LARGE VENUE NEED TO BE ABLE TO HEAR TELECONFERENCING AUDIO ...



Connecting external speakers allows you to deliver audio to a wider area, making this a great solution for large-scale meetings or remote seminars and other events held in large venues.

* Connection of up to two commercially available powered speakers supported. Operation has been confirmed using STAGEPAS 400BT external speakers.

PARTICIPANTS AT THE VENUE NEED TO BE ABLE TO JOIN THE CONVERSATION TOO ...

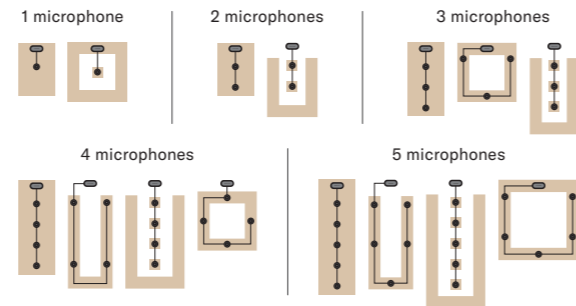


Up to four optional YVC-MIC1000EX extension microphones may be added (total of five microphones). Additional microphones can be placed strategically based on room layout, size, number of participants, etc.

* Please note that audio input from additional YVC-MIC1000EX microphones cannot be played back over the main unit speaker.
* Please verify your configuration in advance to confirm the operation.

Microphones Tested for Compatibility		Audio Cable Required
Wired Handheld Mic	Audio-Technica PRO41	RCA plug to XLR (Female) cable Ex. : Audio-technica ATL417A/3.0, Canare RC05-X1
	Shure : SM58	
Wireless Mic System	Line 6 : XD-V35	Depends on XD-V35 receiver connectors used • If using the unbalanced 1/4-inch audio output, you will need an RCA plug to phone plug (mono) cable. Ex. : Canare QC018 • If using the balanced XLR audio output, you will need an RCA plug to XLR (female) cable. Ex. : Audio-Technica ATL417A/3.0, Canare RC05-X1
		Revolabs HD Dual

OFFERS FLEXIBILITY OF PLACEMENT TO CATER TO ANY TABLE LAYOUT!



PRODUCT INFORMATION



YVC-1000
Unified Communications
Microphone & Speaker System



YVC-MIC1000EX
Extension microphone
for YVC-1000



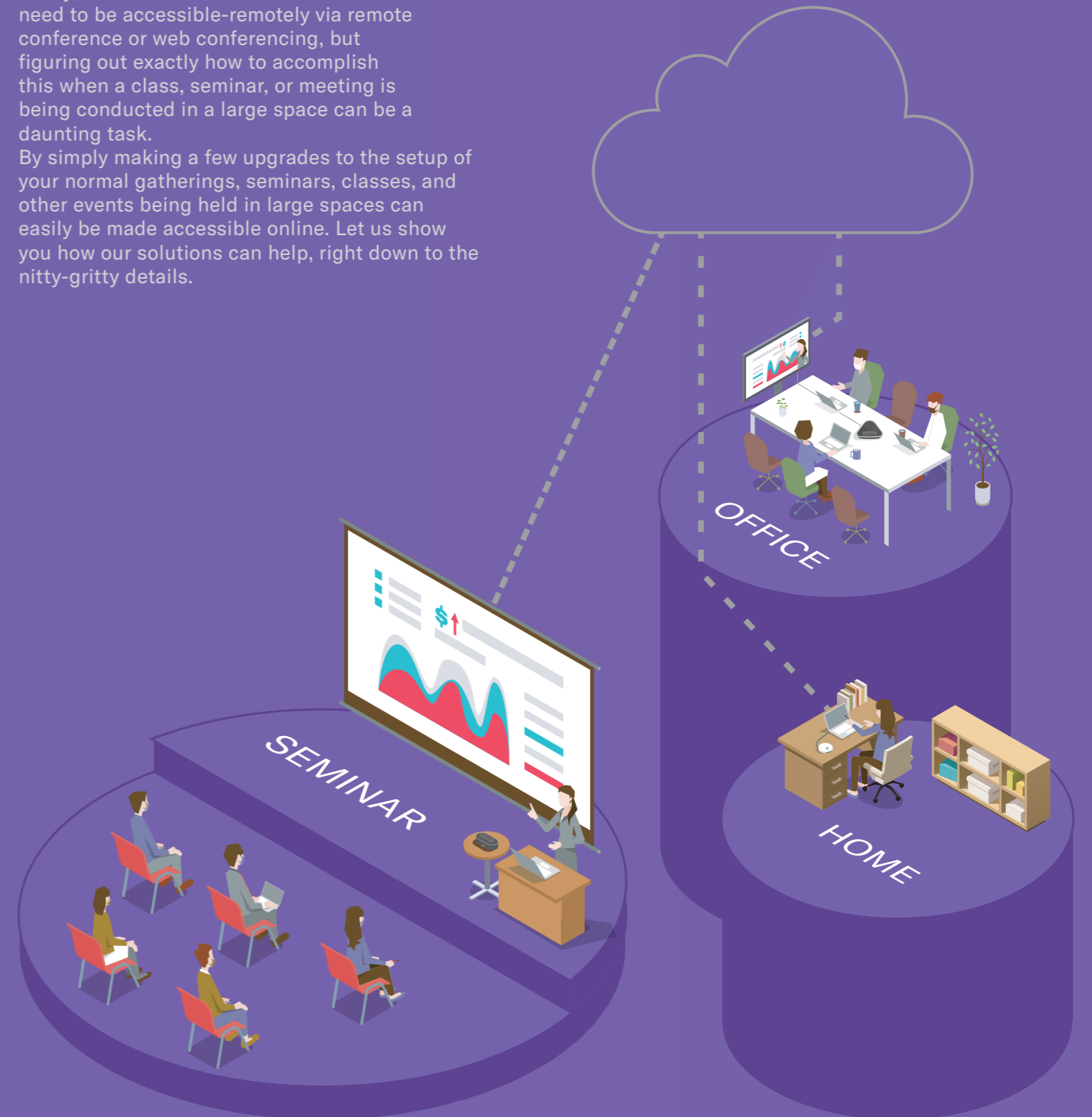
STAGEPAS 400BT
Portable PA System

* Setup must be performed from a PC using the YVC-1000 configurator software, available for download from <https://www.yamaha.com/products/en/communication/download/>.
* YVC-1000 and YVC-1000MS are both supported by the latest release of the configurator software.

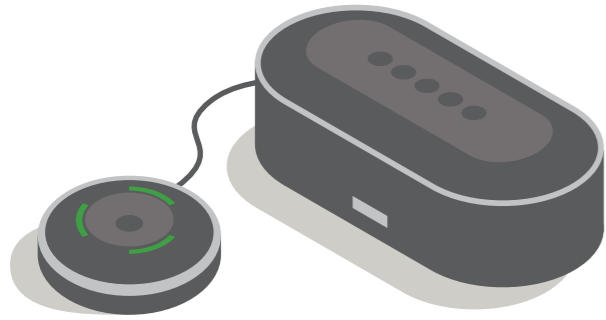
CLASSES, SEMINARS, WORKSHOPS, BRIEFING... ARE YOU LOOKING FOR AN EASY WAY TO MAKE EVENTS ACCESSIBLE-REMOTE, EVEN WHEN CONDUCTED IN A LARGE VENUE?

Today, more and more events like these need to be accessible-remotely via remote conference or web conferencing, but figuring out exactly how to accomplish this when a class, seminar, or meeting is being conducted in a large space can be a daunting task.

By simply making a few upgrades to the setup of your normal gatherings, seminars, classes, and other events being held in large spaces can easily be made accessible online. Let us show you how our solutions can help, right down to the nitty-gritty details.



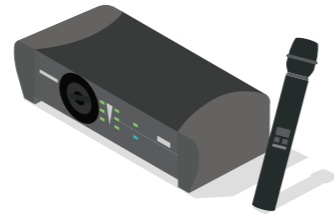
1 Prepare



YVC-1000

- ✓ Connectivity and scalability unmatched by any other speakerphone
- ✓ Automatically determines sound characteristics of the room, mic and speaker placement, etc. and adjusts for maximum performance

The Yamaha YVC-1000 is a USB speakerphone system consisting of the main unit and a single microphone. In addition to the included microphone, the system also supports the connection of handheld microphones and wireless microphone systems. Audio input received from a connected handheld microphone or wireless microphone system can be played over the YVC-1000 speaker while also being transmitted to a remote location.



Wired Handheld Microphone

Please use a microphone that supports a sensitivity of -54.0 ± 6.0 dBV/Pa.

Wireless Microphone System

The YVC-1000 supports wireless microphone systems that output either mic level or line level* signals.

*Mic/line level refers to the signal level output by a device. Please check your microphone to confirm the output. (Wired handheld microphones generally output mic level signals.)

Boundary and condenser microphones not supported!



Boundary Microphone

Using a flat, omnidirectional microphone placed directly on a wall, floor, desk, etc. will result in audio feedback and is not supported.



Condenser Microphone

If you are considering a condenser microphone, please note the YVC-1000 does not include the phantom power supply feature required by some condenser microphones to function.



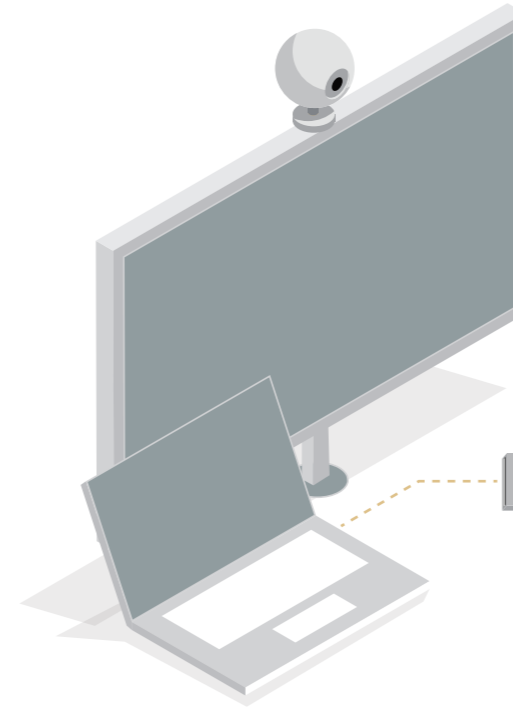
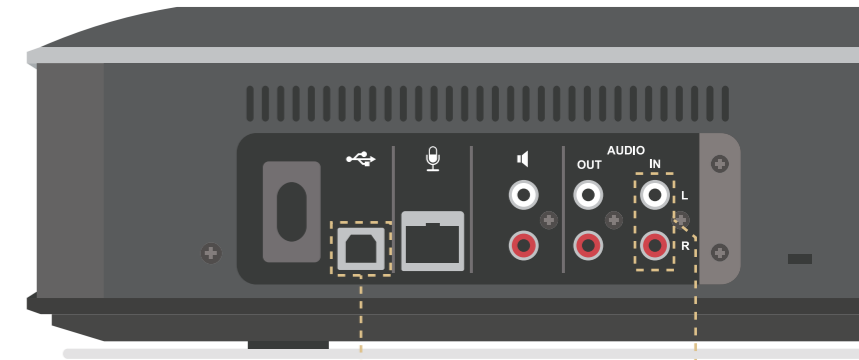
Audio Cable

Please use an audio cable appropriate for the handheld microphone that you will be using. The YVC-1000 uses an RCA connector for audio input.

2 Connect

Use an audio cable to connect your handheld microphone to the audio input (RCA) on the YVC-1000.

Note 1: The cable can be connected to either the L or R audio input connector.
Note 2: Audio input from dedicated YVC-1000 (included or extension) microphones cannot be played back by the main unit speaker.



Your Usual Web Conferencing System

- PC
- Monitor/projector
- Web camera



3 Setup

Use the YVC-1000 Configurator software to set up your YVC-1000.

Note: The MODE of the connector you attached your handheld microphone or microphone system should be set to PA MICROPHONE. The SIGNAL LEVEL should be set to either MICROPHONE or LINE depending on the output signal of your microphone. Volume and tone can be adjusted using the GAIN and EQ settings if necessary.

